

Martin

Genre: Metal Rock

Subject: Hyun Woo, Albert

Aim: to create CD cover

Research on the Genre

Heavy Metal genre

Article

Talk

Read

Edit

View history

Search

Heavy metal music

From Wikipedia, the free encyclopedia

Heavy metal (or simply **metal**) is a genre of music with roots in [blues rock](#) and [psychedelic rock](#),^[1] the bands that created heavy metal developed a thick, massive sound, characterized by highly amplified [distortion](#), extended [guitar solos](#), emphatic beats, and overall loudness. Heavy metal lyrics and performance styles are sometimes associated with [masculinity](#), [aggression](#), and [machismo](#).^[1]

The first heavy metal bands such as [Led Zeppelin](#), [Black Sabbath](#) and [Deep Purple](#) attracted large audiences, though they were often derided by critics, a status common throughout the history of the genre. During the mid-1970s, [Judas Priest](#) helped spur the genre's evolution by discarding much of its [blues](#) influence;^{[2][3]} [Motörhead](#) introduced a [punk rock](#) sensibility and an increasing emphasis on speed. Beginning in the late 1970s, bands in the [new wave of British heavy metal](#) such as [Iron Maiden](#) and [Saxon](#) followed in a similar vein. Before the end of the decade, heavy metal fans became known as "[metalheads](#)" or "[headbangers](#)".

During the 1980s, [glam metal](#) became a commercial force with groups such as [Mötley Crüe](#) and [Poison](#). [Underground scenes](#) produced an array of more aggressive styles: [thrash metal](#) broke into the mainstream with bands such as [Metallica](#), [Megadeth](#), [Slayer](#), and [Anthrax](#), while other [extreme subgenres](#) of metal such as [death metal](#) and [black metal](#) remain [subcultural phenomena](#). Since the mid-1990s popular styles have further expanded the definition of the genre. These include [groove metal](#) (with bands such as [Pantera](#)) and [nu metal](#) (with bands such as [Slipknot](#), [Korn](#) and [Linkin Park](#)), the latter of which often incorporates elements of [grunge](#) and [hip hop](#).

Contents

hide

1

Characteristics

1.1

Musical language

1.1.1

Rhythm and tempo

1.1.2

Harmony

1.1.3

Typical harmonic structures

1.1.4

Relationship with classical music

1.2

Lyrical themes

1.3

Image and fashion

1.4

Physical gestures

1.5

Fan subculture

2

Etymology

3

History

3.1

Antecedents: 1950s to mid-1960s

3.2

Origins: late 1960s and early 1970s

3.3

Mainstream: late 1970s and 1980s

3.4

Other metal genres: 1980s, 1990s, and 2000s

Heavy metal

Stylistic origins

Blues rock **·** psychedelic rock

Cultural origins

Late 1960s, United Kingdom and United States

Typical instruments

Electric guitar **·** bass guitar **·** drums **·** vocals

Derivative forms

Grunge

Subgenres

Avant-garde metal **·** extreme metal (black metal **·** death metal **·** doom metal **·** thrash metal) **·** glam metal **·** groove metal **·** power metal **·** speed metal **·** traditional heavy metal (complete list)

Fusion genres

Alternative metal (funk metal **·** nu metal **·** rap metal) **·** Christian metal **·** crust punk **·** drone metal **·** folk metal **·** gothic metal **·** grindcore **·** industrial metal **·** metalcore **·** neoclassical metal **·** post-metal **·** progressive metal **·** sludge metal **·** stoner rock **·** symphonic metal **·** Viking metal

Regional scenes

Australia **·** Brazil **·** Finland **·** France **·** Germany **·** Japan **·** Norway **·** Sweden **·** United Kingdom **·** United States

Local scenes

San Francisco Bay Area

Other topics

Fashion **·** hard rock **·** list of bands **·** list of festivals **·** subculture **·** timeline **·** unlabeled

The summary of Heavy Metal is this type of genre of music was formed through mixing a variety of genres such as the Blues and Psychedelic Rock. The genre usually consists of a typical setup of a electric guitar, bass guitar, drums and vocals. All instruments are able to produce extremely loud and thick sounds which signified expressing masculinity and aggressive behaviour. This genre is not a mainstream genre as the music is usually associates with rebellion which leads to most artist wearing clothing with black and white and extremely abnormal clothing and makeup.

Artists Research

Marilyn Manson



A good example would be an artist by the name Marilyn Manson. His physique is quite slim and appearance is abnormal as he's covered in make up such as white, red and blue possibly associating with a clown like appearance. His metal accessories and extreme black hard leather like clothing is very different from mainstream clothing representing rebellion against social norms. Most of his songs are quite extreme, explicit and violent mostly meaning.

Disturbed



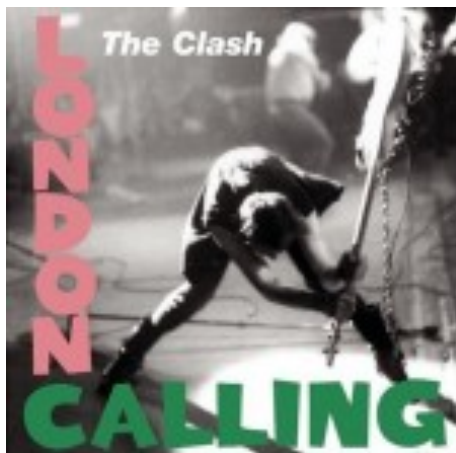
Disturbed is a Heavy Metal band that's more mainstream with their appearances and songs. Their appearances look more mainstream as they are wearing casual clothing without wearing any extreme makeup to look rebellious or different. The convention keep the same in terms of wearing black clothing and metal accessories.

Top 100 Best Albums

http://rateyourmusic.com/list/fedderedder/rolling_stones_100_greatest_album_covers/



Analysis



The Clash

The Clash were an English punk rock band that formed in 1976 as part of the original wave of British punk. What appears on the CD cover is one of the band members about to break the guitar, a spotlight pointing at the subject, the background seems to show the subject being in a performing room and the font is in bold sans serif font. The reason why the Clash uses this font very similar to Elvis Presley's CD cover is because The Clash is showing that their band is the new trend and not Elvis. This could be connoted as a controversial move to increase publicity to the media and aficionada fans of Elvis Presley or simply show that the band is better than Elvis.

- Color palette: (commonly) black and white, pink and green
- Subject about to smash the guitar
- Location background: near stage
- Spotlight lighting
- Connote violence, dominance and rebellion.

<http://www.billboard.com/photos/6804525/best-album-covers-of-2015-critics-picks/2>

Portrait photographers

Lee Jeffries



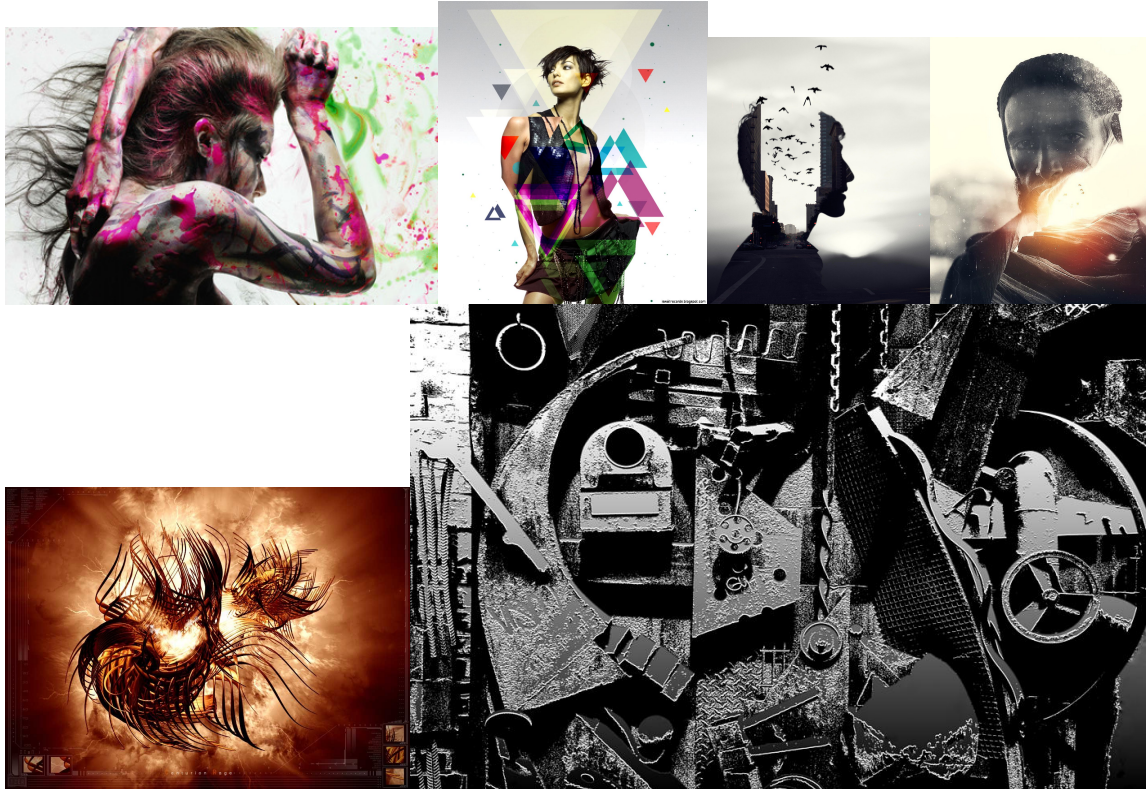
Analysis

Lee Jeffries portrait photographs usually consist of dim one point lighting directly facing subjects face. This creates a sense of darkness and dominance the subject looks like as only the most of the face is lit and not the background.

Why use it?

I believe that this kind of lighting and photography is very suitable for my CD cover or Poster because the lighting used creates depth into the characters face and personality. For example, heavy metal usually expresses connotations such as sex, violence, darkness and rebellion. Using this type of lighting for Heavy Metal creates a sense of darkness that perfectly fits the genre.

Abstract ideas



Heavy Metal Album



Analysis

Most of the heavy metal CD covers do not have a real person as their subject instead use fantasy like drawings to express Heavy metal connotations such as sex, violence, dominance, rebellion and darkness.

- Serif font
- Color palette: red, blue, black, white, orange etc.
- Dominant representations of hyper masculinity and femininity.
- Male gaze theory
- Religion connotations
- Connotes sex, violence, dominance, rebellion and darkness

<https://www.youtube.com/watch?v=xLBgVZbwoqU>

Subject: Hyunn Woo Jung



Other ideas



三浦建太郎



Development of design

Decision

Our group decided that most of the designs for the CD covers based on the Heavy metal genre is quite difficult to create as most of the CD cover designs are related to sex, violence

and hypermasculinity and fantasy based drawings as the school and actors would limit how much we put into the CD cover. However, we decided to design our CD cover similar to the conventions shown in Heavy metal CD cover designs however make it less explicit and more darker using abstract connotations to make up for the genre conventions and representational designs.

Our design based on more on connotations such as violence, blood, rebellion, extreme and darkness for our CD cover.

First Idea (Martin Ma)



Screen testing and Equipment list

- Lighting 3 point lighting: two soft boxes and one
- DSLR
- Tripod
- Studio

Martin MA [12R07S] <16mamt1@kgv.hk> 22 Sep ☆ ↩ ▾
to *Function ▾
Dear John and Kingsley,
I would like to book the studio 28th Wednesday Lunch time and 29th Thursday After school. Purpose of borrowing the studio is to do my BTEC coursework. Please reply as soon as you can. Thank You.
Best Regards,
Martin Ma

AV-Media KGV 22 Sep ☆ ↩ ▾
to me ▾
Martin,
Both of the time are fine and I've reserved for you. See you on next Wednesday and Thursday.
The Av-media Team
From: Martin MA [12R07S] [mailto:16mamt1@kgv.hk]
Sent: Thursday, September 22, 2016 8:52 AM

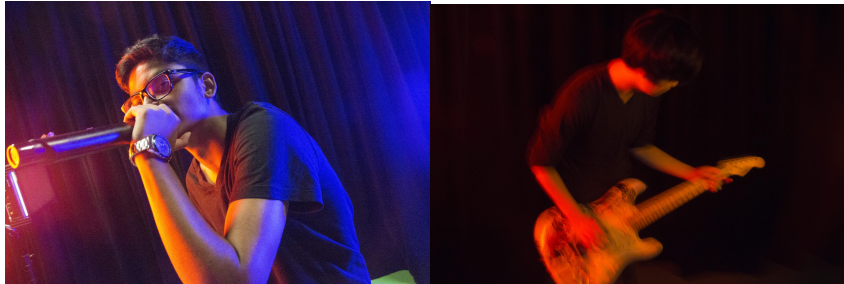


- 1) 18-100mm lens
- 2) 50mm lens

Camera angles (experiments)



Colour lighting



Location scouting

Studio

Why I choose this location.

Reasons

- All equipment in studio
- Green screen
- Inside of school
- Convenient/ less time consuming for actors
- Accessible to anyone
- Controlled setting- able to control the lighting in the room.
- Food nearby
- Charger plugs nearby

Location scouting in Ho Man Tin

Reasons

- Lighting
- Time of day
- Convenient
- Food stall nearby
- Testing camera angles
-

Schedule

Monday 19th September	Making schedule, Booking equipment + Studio, Discussing Job Roles, brainstorming
Tuesday	
Wednesday	
Thursday	
Friday	Finish Research on the Heavy metal and CD covers, and photographers
Saturday	Finish draft design concept for CD cover
Sunday	Finish draft design concept for Poster Discuss about the CD cover with group members and the actor. Finalise.
Monday	Look for costume and rent it.
Tuesday	
Wednesday	Studio
Thursday	Editing
Friday	Editing
Saturday	Editing/ Upload
Friday October 7th	